



AI MEETS
THE OCEAN

GulfTwin



BLUE ECONOMY

Today faces many challenges
Most of them are linked with
SUSTAINABILITY and
CLIMATE CHANGE RESILIENCE

SOLUTION

GulfTwin

Uses the latest technologies:
3D modelling
Augmented Reality
Generative and Predictive AI

to provide

AN INNOVATIVE TOOL

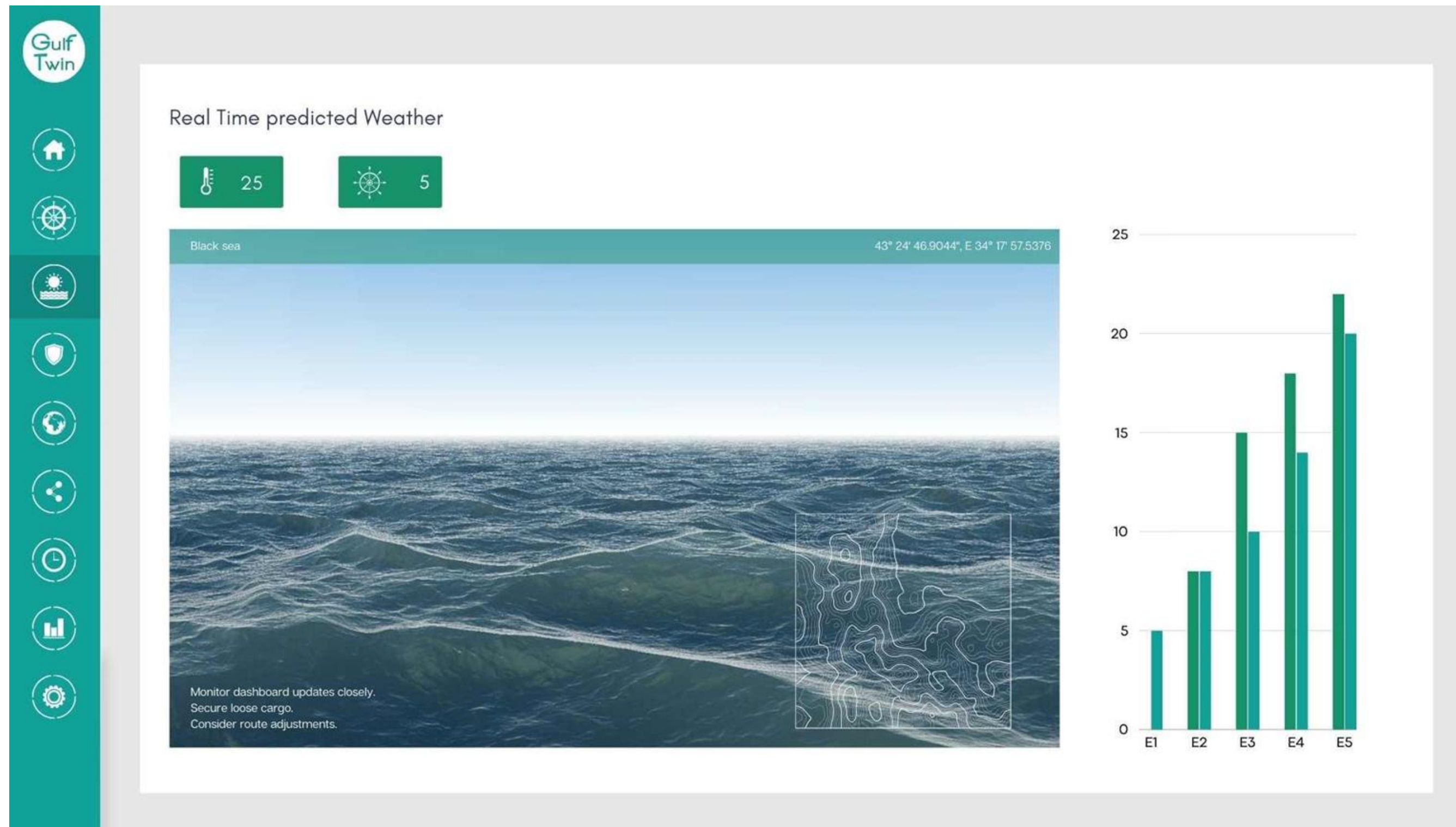
for

Meteorology and oceanography forecasting
Coastal planning
Autonomous maritime vehicles

A digital twin for AI meteorology and oceanography Forecast

PRODUCT

SOLUTION



A 3D model based on high resolution bathymetric lines that gathers data from multiple sources to elaborate meteorology and oceanography predictions through generative and predictive AI.

Critical events management and coastal planning

PRODUCT

SOLUTION

The screenshot displays the GulfTwin software interface. On the left is a vertical navigation menu with icons for Home, Navigation, Weather, Alerts, and Settings. The main area is divided into four functional blocks:

- Autopilot:** Represented by a green button with a steering wheel icon.
- Weather Forecast:** Represented by a green button with a sun and cloud icon.
- Route Planning:** Represented by a green button with a path icon.
- Alert:** Represented by a red button with a warning triangle icon.

Below these blocks, the interface shows two maps of the Gulf of Mexico region, a line graph of surface temperature, and an alert panel.

Surface Temperature Graph: The graph plots Surface Temperature in degrees Celsius (°C) on the y-axis (ranging from 27 to 34) against time on the x-axis (from 2018-01 to 2019-01). Two data series are shown: LD20-DA (red line) and MB2300454 (blue line). Both series show a seasonal cycle, with temperatures peaking around 33°C in May and dipping to around 28°C in August.

Urgent Maritime Weather Alert Panel: This panel features a red warning triangle icon and the text "Urgent Maritime Weather Alert". It lists the following conditions:

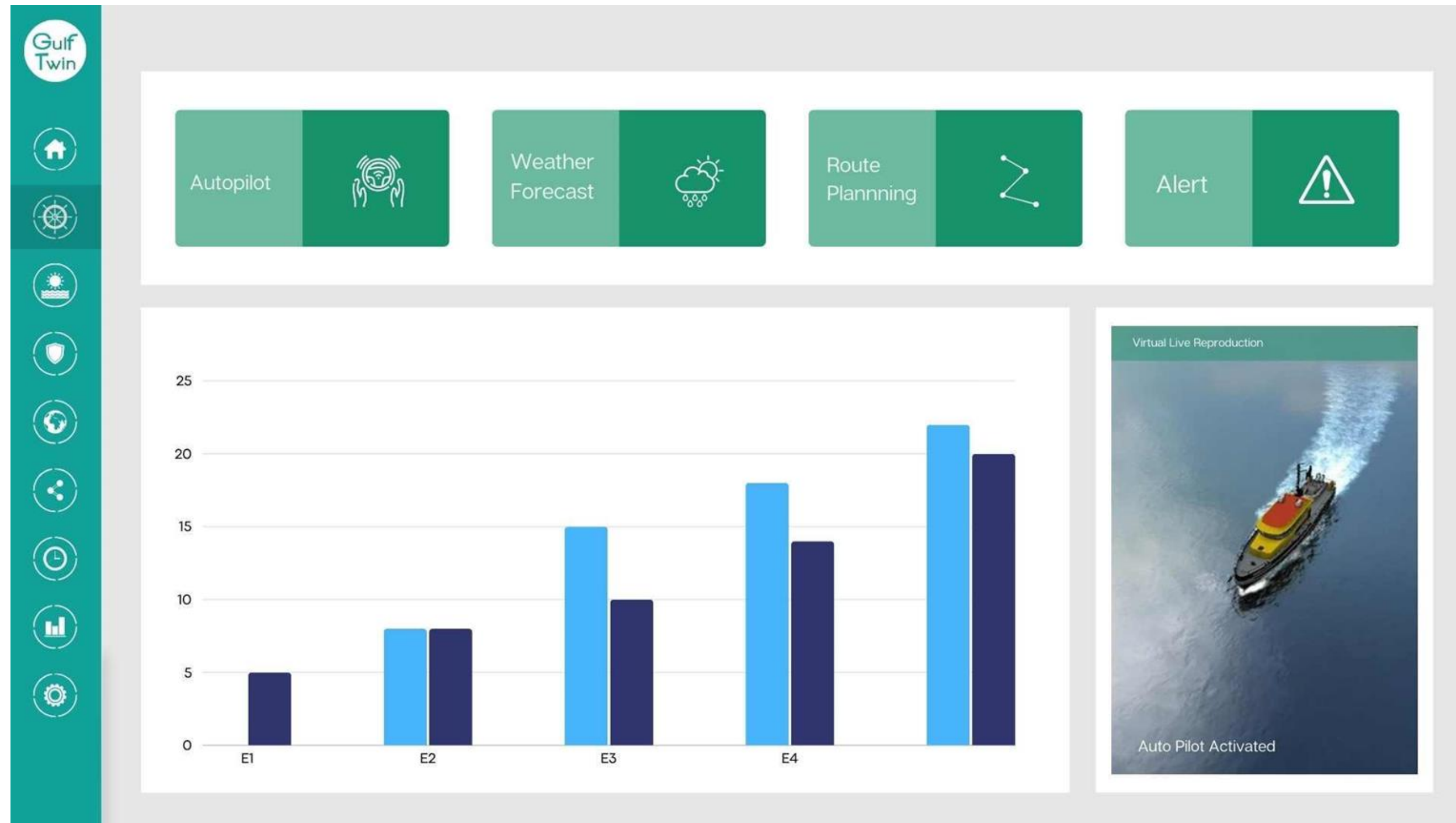
- Critical weather conditions detected
- High wind speeds: 40 knots
- Elevated sea swells: 5 meters
- Potential storm formation

A high tech tool that can effectively help institutions, research centers, maritime operators and other actors to cope with the climate change challenges specially to manage critical and unusual weather events and to improve Coastal planning forecasting the effects of the global warming.

A Support for autonomous navigation vessels

PRODUCT

SOLUTION



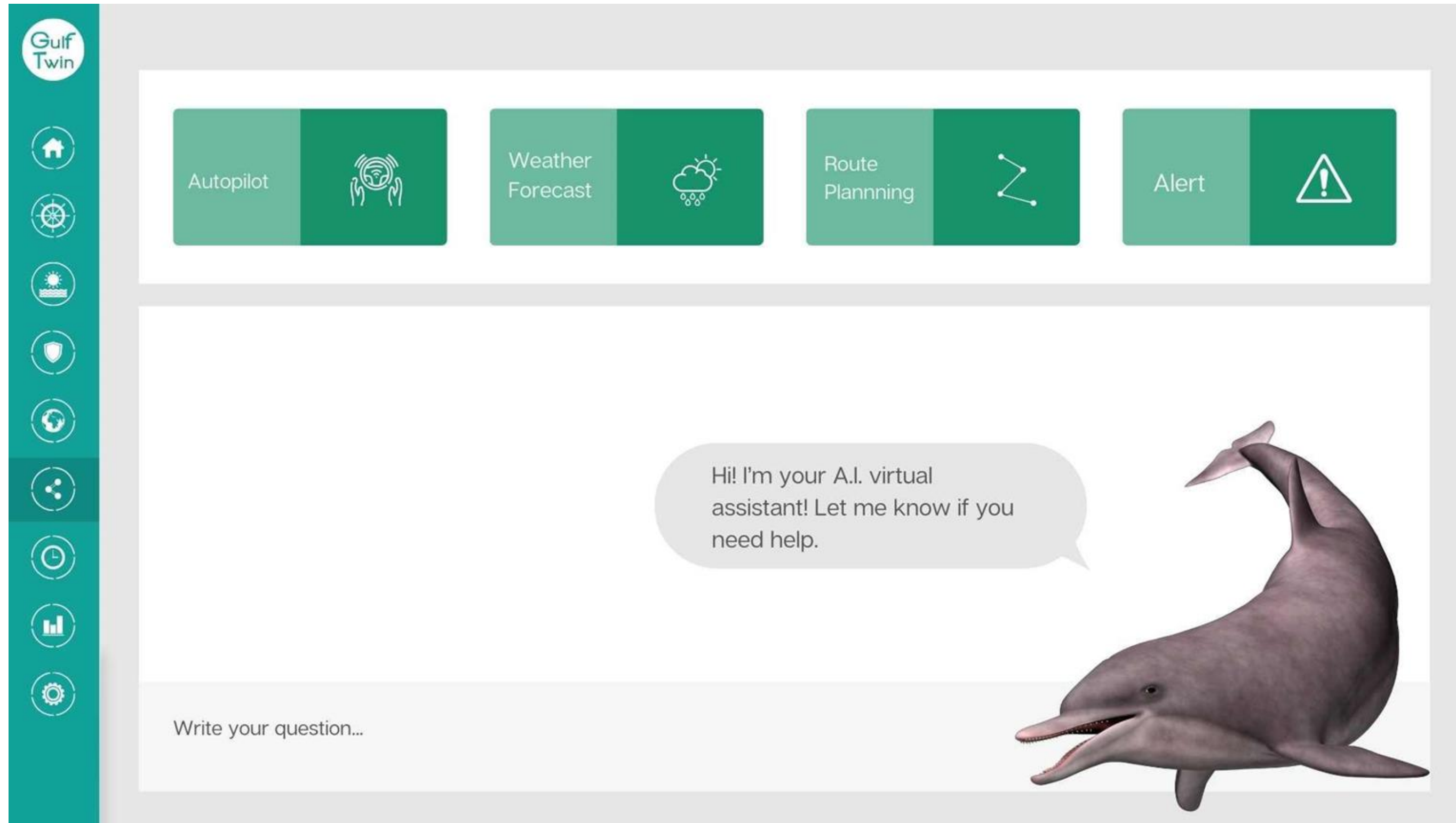
GulfTwin is an important support for the development and the operations of autonomous marine units.

Its AI features can easily integrate with navigation and guidance systems solving the problem of adaptation to continuously changing weather and sea conditions

AR interface and Avatar

PRODUCT

SOLUTION



The interface works in augmented reality (AR) which gives to the simulation a high definition of details.

An avatar, designed as a dolphin, allows the user to an easy interaction with the system.

The AI dolphin will set the scenarios, answer questions, run researches and make decisions when requested

PUBLIC & INSTITUTIONS

- RESEARCH CENTERS
- UNIVERSITIES
- CITIES
- MARITIME AND COASTAL
AUTHORITIES

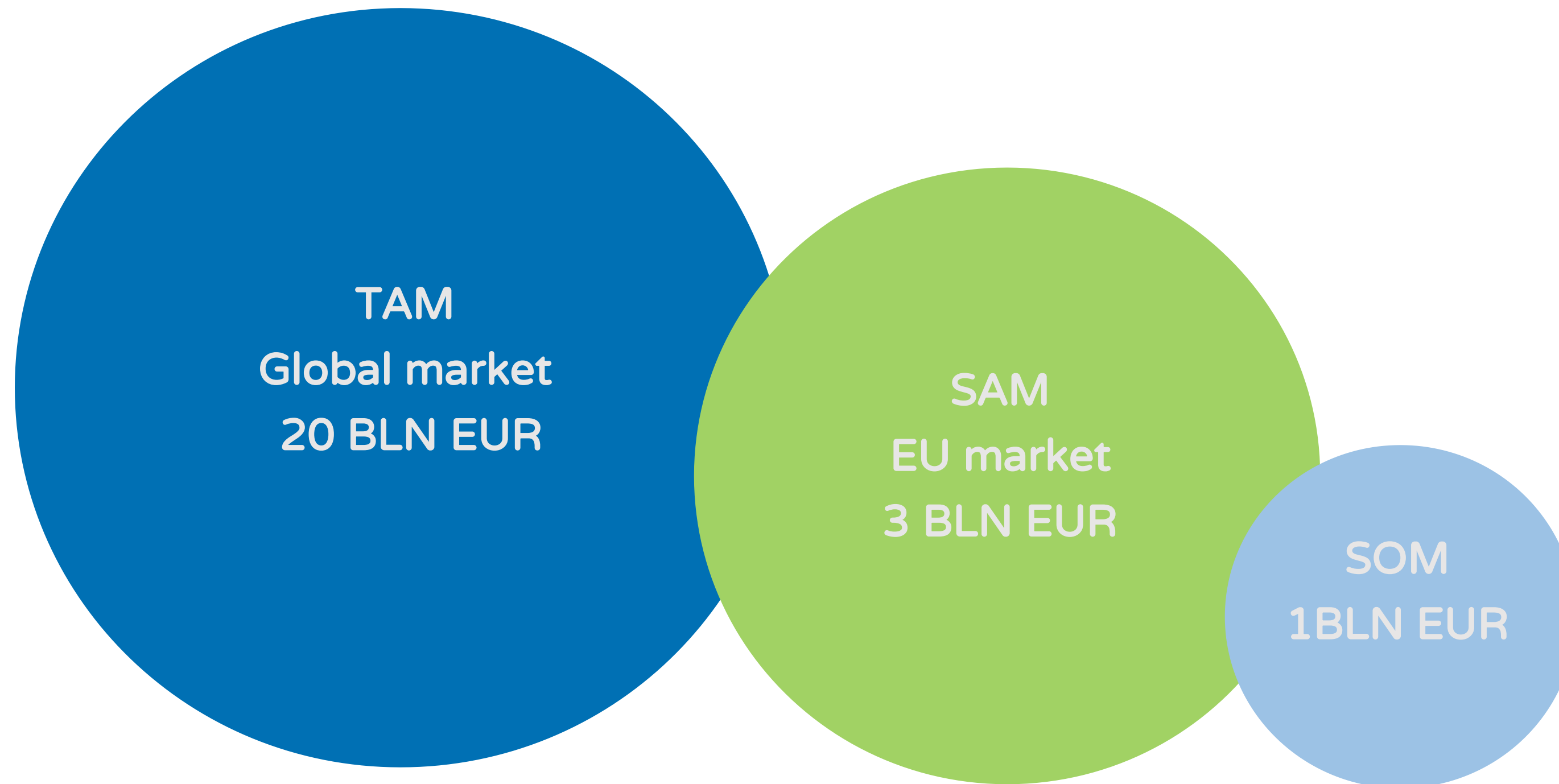
PRIVATE

- TOURISM
- NAVIGATION
- AUTONOMOUS SEA MOBILITY
- LANDSCAPE PLANING
- PORTS AND MARINAS

COMPETITORS



	GulfTwin	oceanweather inc.	SINAY
OCEANOGRAPHIC FORECAST	✓	✓	✓
AUGMENTED REALITY	✓	✗	✗
INTERACTIVE AVATAR	✓	✗	✗
AI INTEGRATED FEATURES	✓	✗	✓
PREDICTIVE AND GENARATIVE AI	✓	✗	✗





B2B

A system suitable for public or private entities working in research, coastal planning, Blue tourism, sustainability, water mobility, emergency response. Ports operations and more

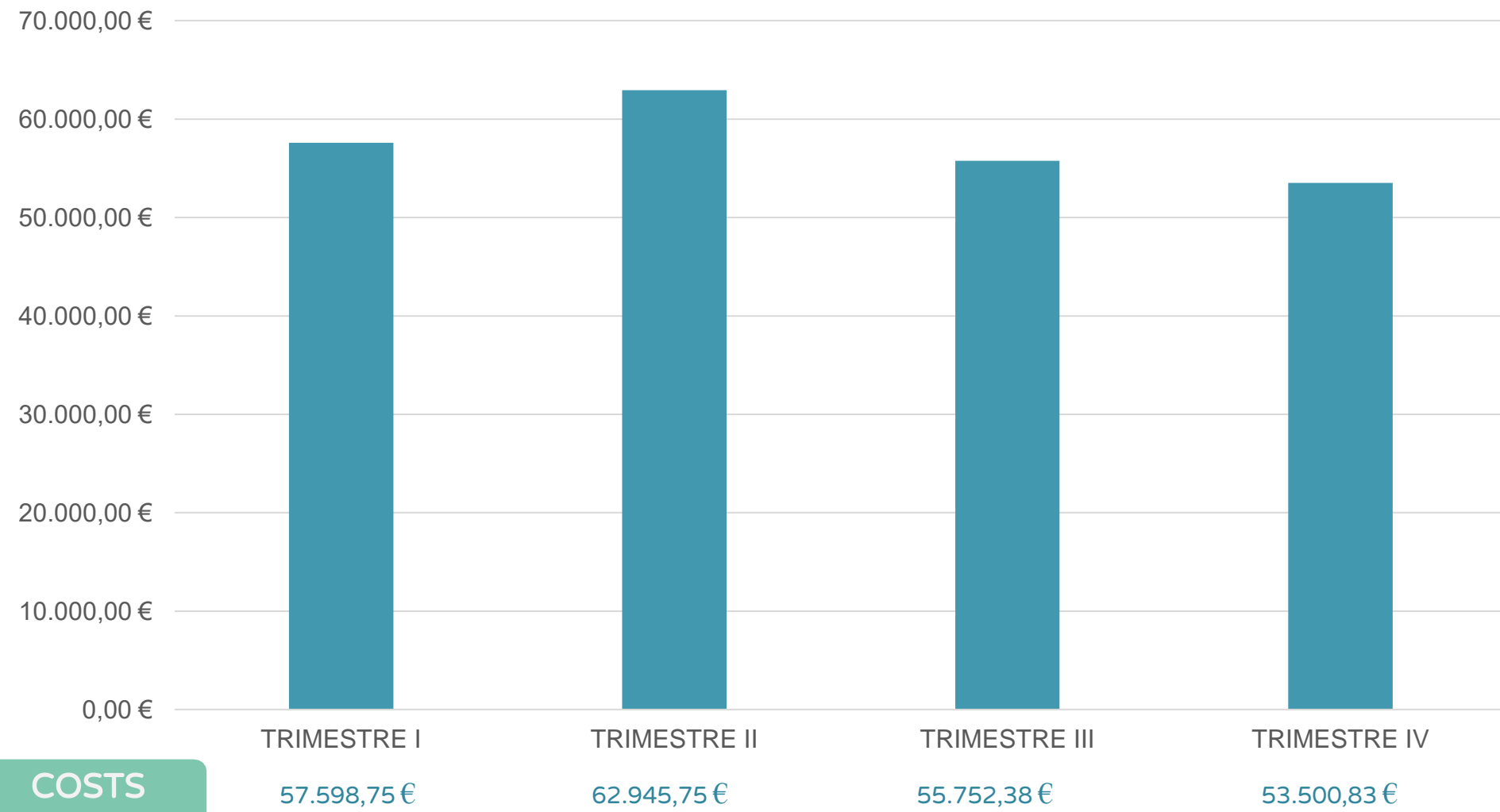
License

The system is sold on License like a software, It can be custom set with a variable setting fee

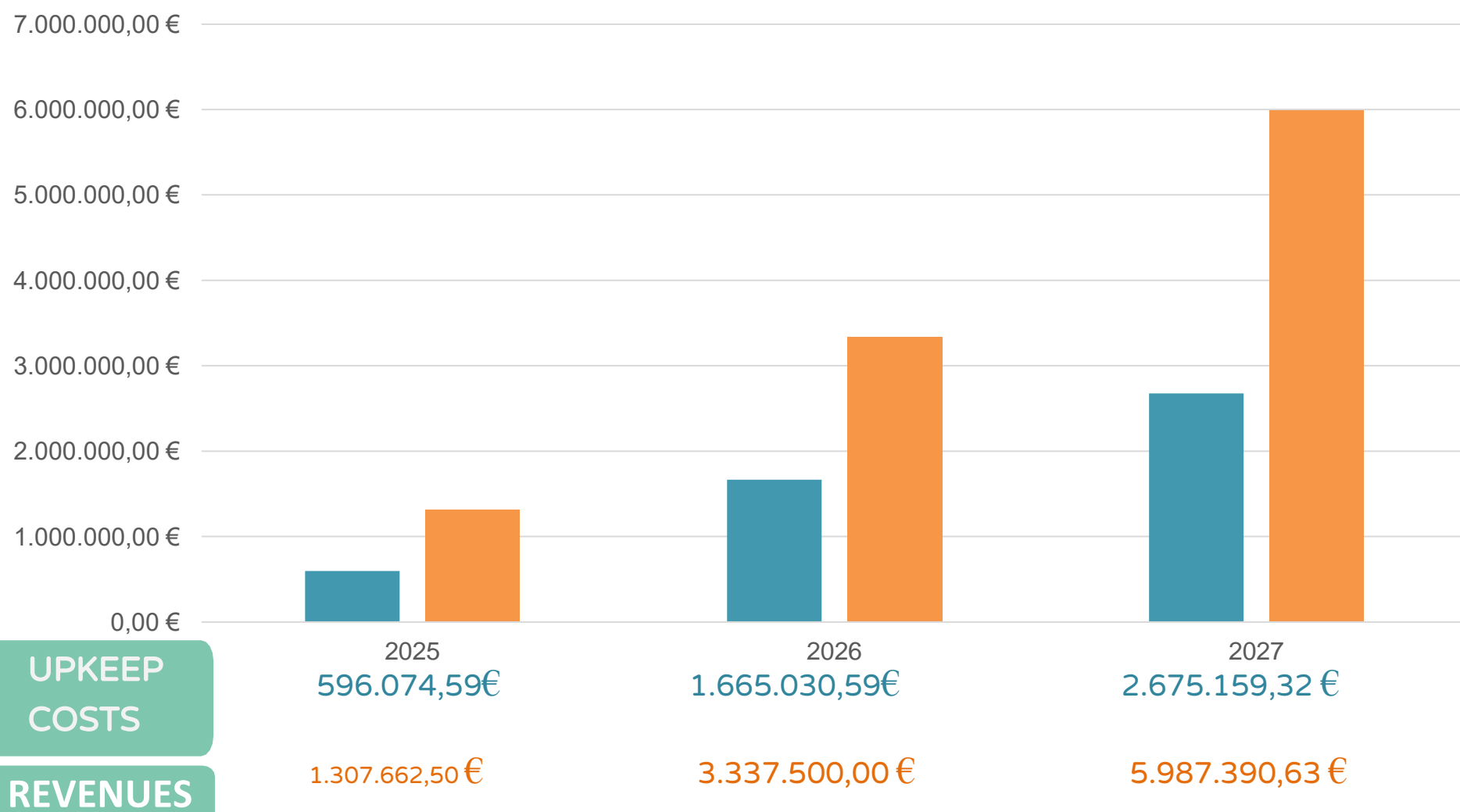
REVENUES VS COSTS

BUSINESS

FINANCIALS



FINANCIAL NEEDS 24/25
 Project development
229.797,71€



TOTAL REVENUE NEXT 3 YEAR
5.466.490,89€



Antonio Amendola
Project Manager

Aerospace/aeronautical engineer with 20+ years of experience in the aeronautic industry. Experience in international business relations and international team work.



Rosa Palumbo
Ocean Specialist

Teacher of Navigation Sciences, a nautical technical consultant, a sailing and a nautical instructor. PhD in Nautical Sciences from the Parthenope University of Naples, Expert in weather-oceanographic modeling.



Roberta Gasparro
Marketing Specialist

Experienced Digital marketer and entrepreneur. Certified by Google and SEMrush. Skills in problem solving and human resources management. Previous experience in Blue economy companies.



Christian Allevi
Program Manager and Software Developer

He has participated in innovative technology application projects. His knowledge of various programming languages and his experience allow him to have wide-ranging expertise.



Carmine Reale
Software Developer

He is specialized in the design and assembly of electronic circuits and microcontroller programming. He has in-depth knowledge of electronic circuit design, electronic circuit board (PCB) construction.



Majlinda Tomori
Data analyst

She has a degree in mathematics and economics. Through her studies and subsequent professional experience, she has developed expertise in data analysis.



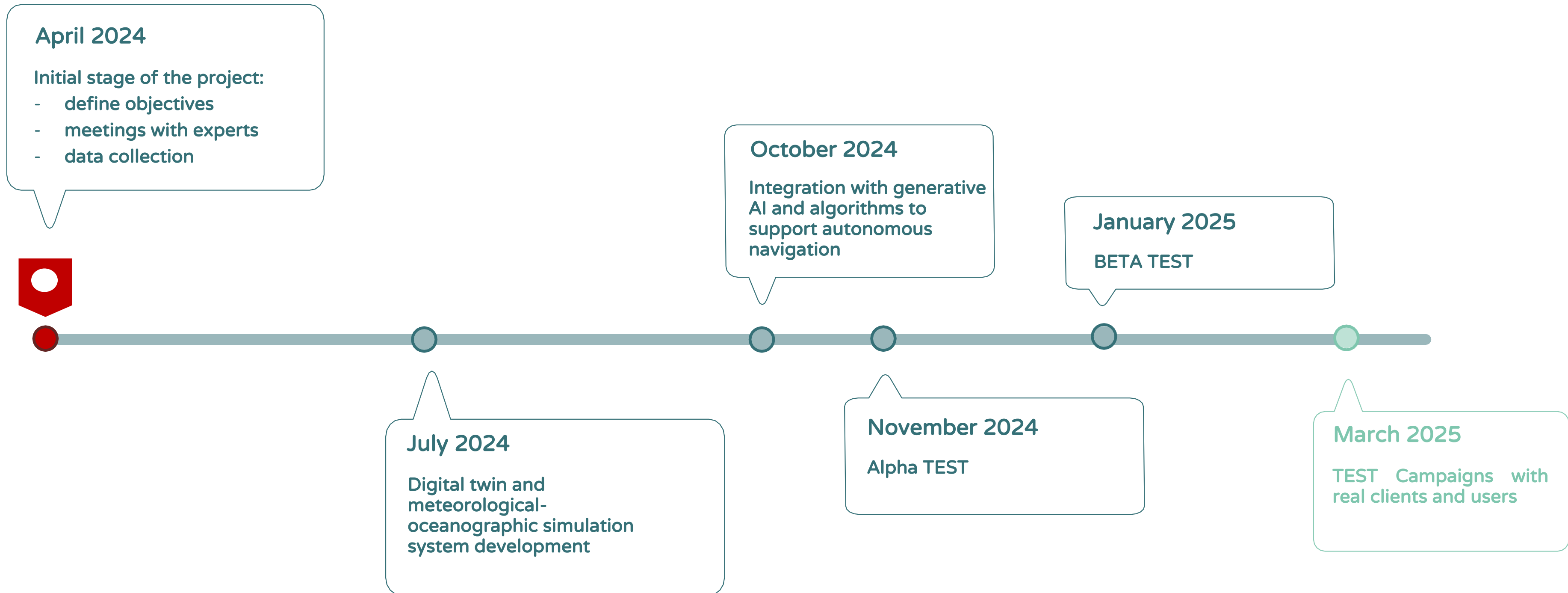
Cecilia Messi
Software tester

She has experience ranging from technical-scientific skills to management skills, and her experience enables her to conduct tests on the operation of advanced technological solutions.



Alice Conselmo
Technical support

Her job is to organize teams so that everyone's skills can converge in the creation of innovative products. Alice is also responsible for managing the technical support team.



Impact



THANKS

ANTONIO AMENDOLA

Via Nazionale Appia nc 372 – Casapulla (CE), Italy

<https://www.safehome.cloud/>

+393470547214

+393489230576

GulfTwin